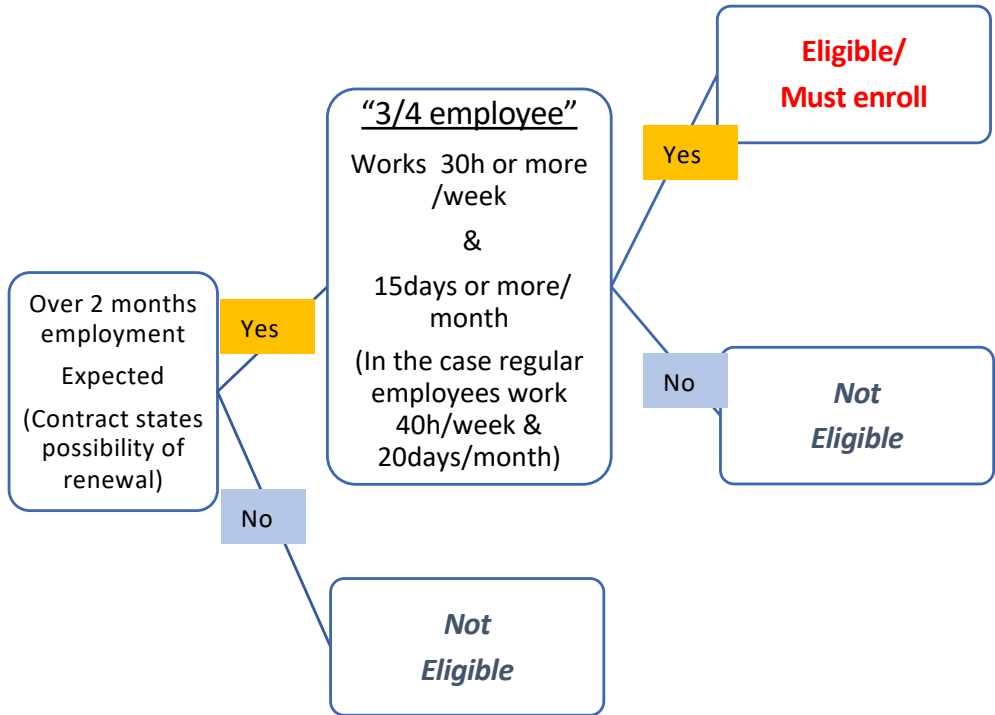
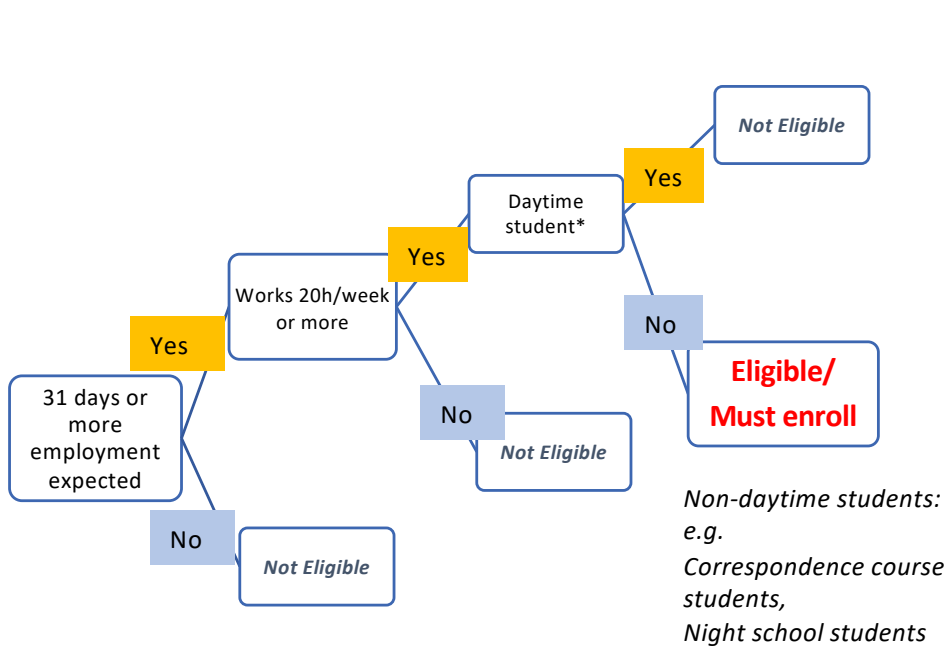


Insurance Enrollment : Determining Part-timer's Eligibility (v2)



Labor Insurance- Employment Insurance

Social Insurance- Health & Pension



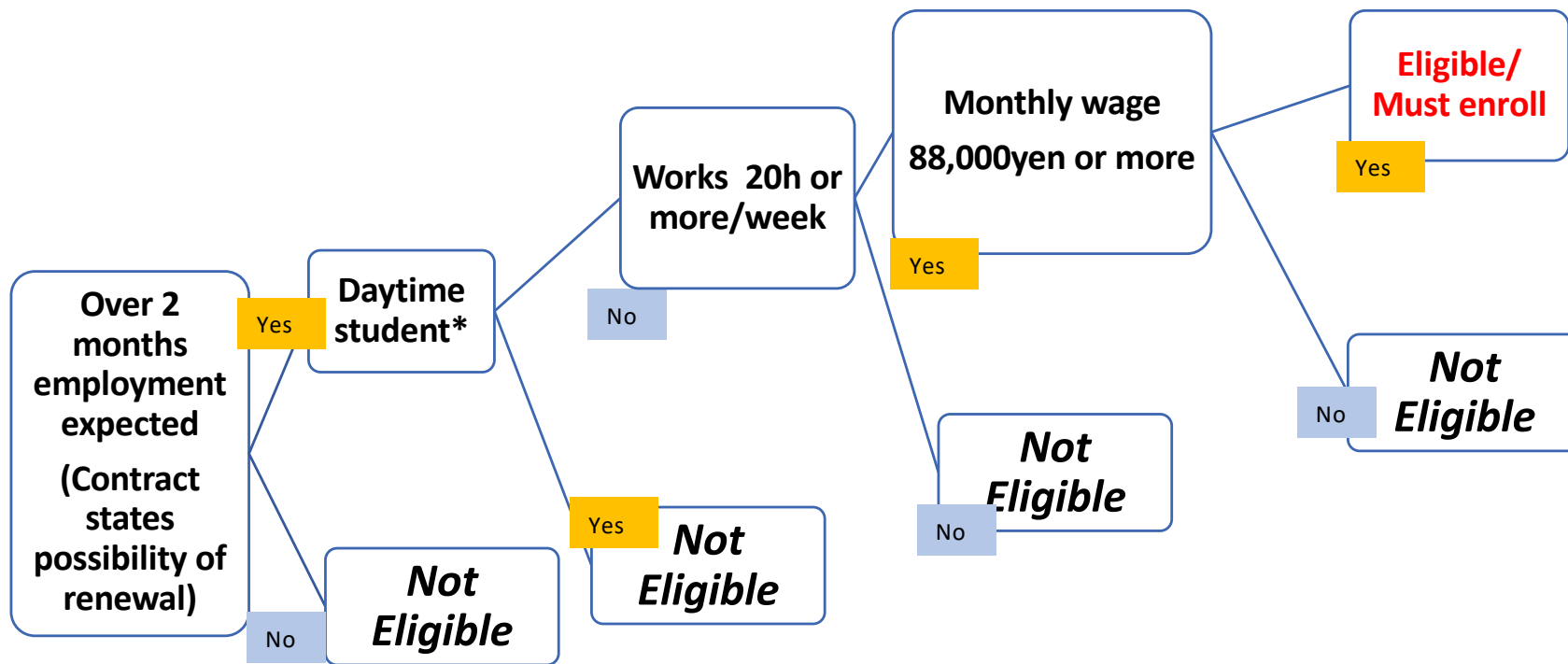
*Daytime student: Below cases must be enrolled in Employment Insurance
 -Students on leave
 -Students with certificate of expected graduation and who will join the company upon graduation
 -Students attending graduate school by company order/agreement

Attention!! Company Size
 Chart applies to those businesses with 50 or less pension enrollees (From Oct 2024)

Insurance Enrollment : Determining Part-timer's Eligibility (v2)



Social Insurance- Health & Pension (For Companies with 51 or more employees enrolled in Pension)



*Daytime student: Below cases must be enrolled

- Students on leave
- Students with certificate of expected graduation and who will join the company upon graduation
- Students attending graduate school by company order/agreement